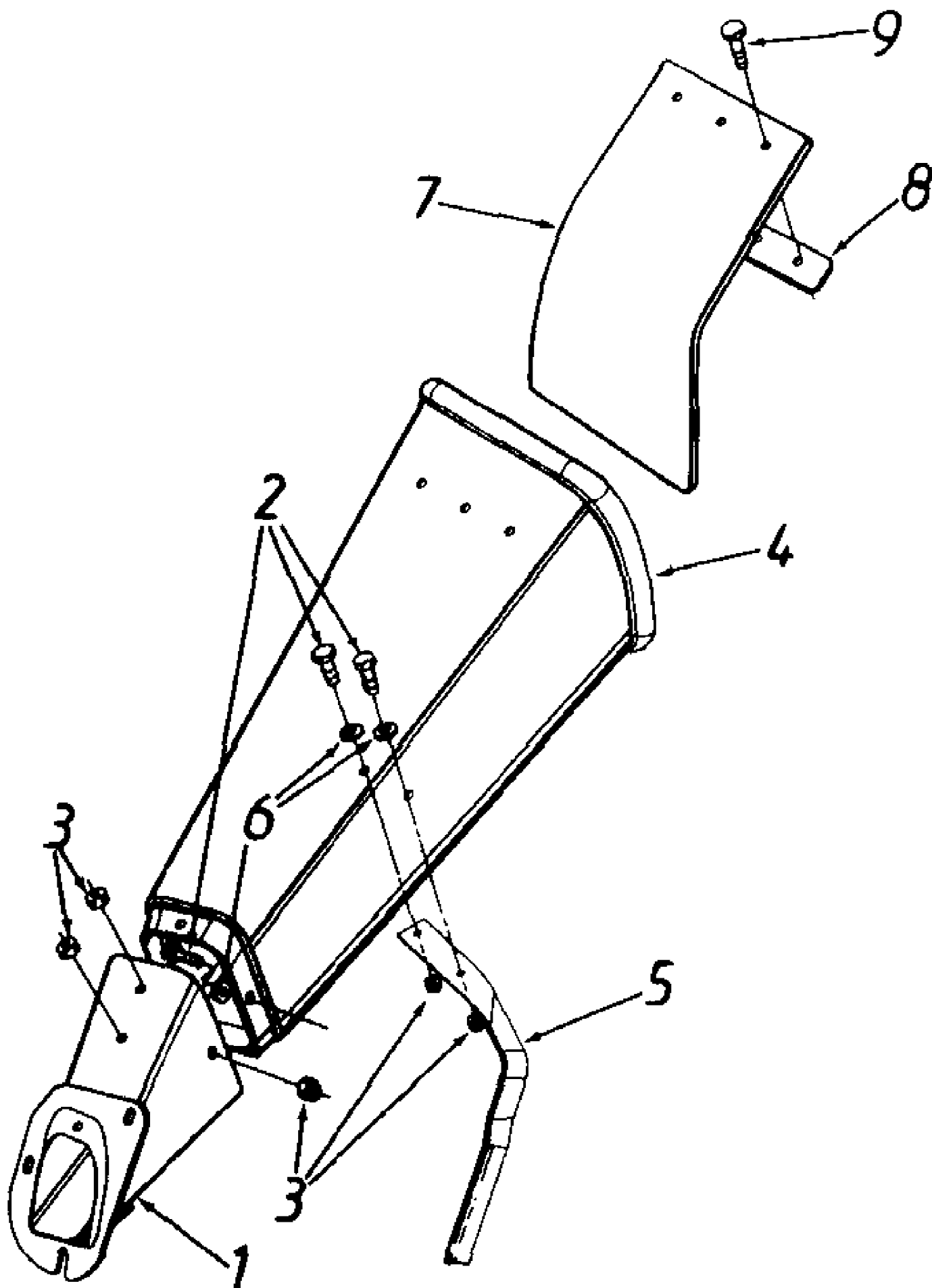


246-315B190 8 H.P. Lawn Vacuum (1996)  
Chipper Assembly

Page 2 of 22

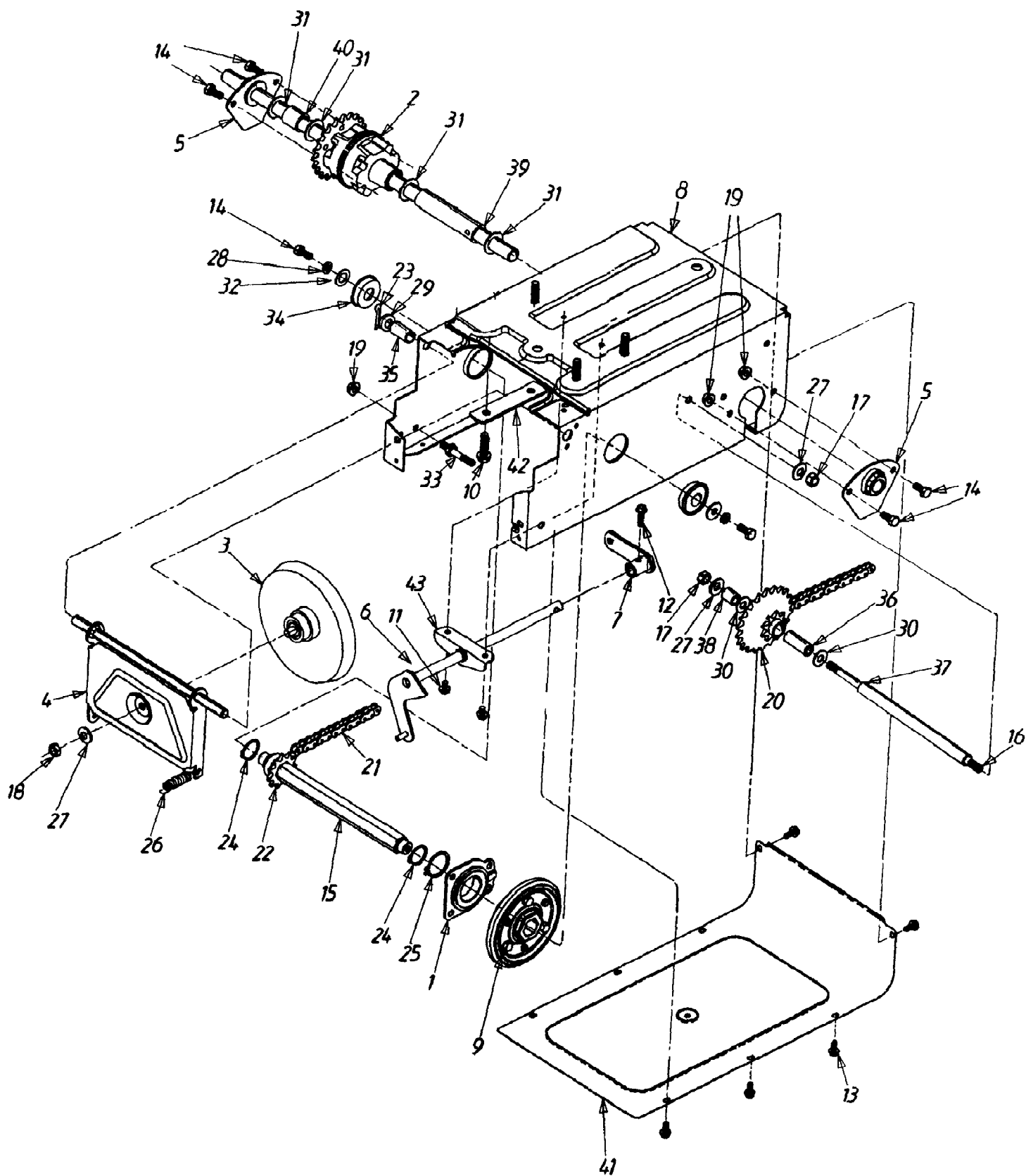
| Ref # | Part Number | Qty | S/P/F | Description              |
|-------|-------------|-----|-------|--------------------------|
| 1     | 629-0241    | 1   |       | HARNESSESS - CHIPPER VAC |
| 2     | 681-0059    | 1   |       | HOUSING ASSY - INNER     |
| 3     | 681-0060    | 1   | /P    | HOUSING ASSY - OUTER     |
| 4     | 710-0382    | 2   |       | SCREW - HEX              |
| 5     | 710-0604    | 10  | S     | SCREW - HEX SELF TAP     |
| 6     | 710-0607    | 8   | /P    | SCREW - HEX SELF TAP     |
| 7     | 710-0772    | 3   | /P    | SCREW - HEX              |
| 8     | 710-1268    | 2   | /P    | SCREW - HEX SELF TAP     |
| 9     | 710-3008    | 2   | /P    | SCREW - HEX              |
| 10    | 712-0384    | 2   | S     | NUT - HEX LOCK           |
| 11    | 712-0421    | 3   |       | KNOB                     |
| 12    | 712-3004A   | 4   | /P    | NUT - HEX LOCK           |
| 13    | 712-3010    | 3   | S     | NUT - HEX (GR 5)         |
| 14    | 719-0326    | 1   |       | SCREEN                   |
| 15    | 723-0438    | 2   |       | SEAL - RUBBER            |
| 16    | 725-1700    | 1   | S     | COVER - SWITCH           |
| 17    | 725-3166    | 1   | S     | SWITCH                   |
| 18    | 726-0272    | 1   | /P    | CLAMP                    |
| 19    | 731-1613    | 1   | S     | COVER SWITCH             |
| 20    | 736-0119    | 3   | S     | WASHER - LOCK            |
| 21    | 736-0242    | 3   | /P    | WASHER - BELL            |
| 22    | 781-0598    | 1   | S     | BLADE - FLAIL HOUSING    |
| 23    | 781-0599    | 1   | S     | BLADE - FLAIL HOUSING    |
| 24    | 781-0627    | 1   |       | COVER - CHIPPER          |



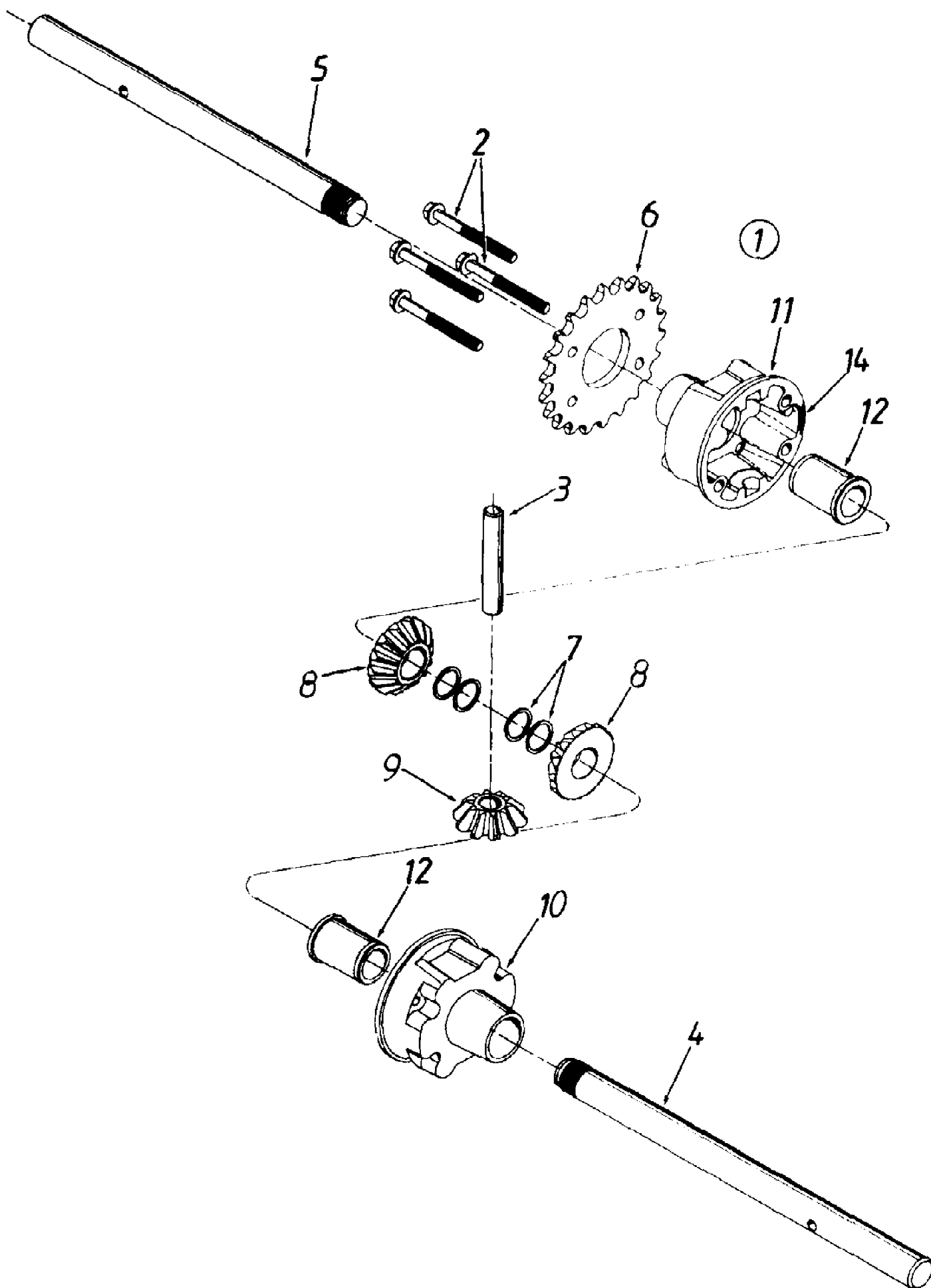
246-315B190 8 H.P. Lawn Vacuum (1996)  
Chute Assembly

Page 4 of 22

| Ref # | Part Number | Qty | S/P/F | Description                        |
|-------|-------------|-----|-------|------------------------------------|
| 1     | 681-0068    | 1   | S     | CHUTE ASSEMBLY                     |
| 2     | 710-0258    | 5   | S     | SCREW HEX                          |
| 3     | 712-3027    | 5   | S     | NUT - LOCK                         |
| 4     | 731-1609    | 1   | S     | CHUTE - CHIPPER UPPER              |
| 5     | 736-0173    | 5   | /P    | FL-WASH. .28" I.D. x .73" O.D.     |
| 6     | 781-0625    | 1   |       | BRACKET SUPPORT                    |
| 7     | 735-0249    | 1   | S     | FLAP                               |
| 8     | 781-0633    | 1   |       | STRIP - FLAP                       |
| 9     | 728-0175    | 3   |       | RIVET                              |
|       | 731-1617    | 1   | /P    | TAMPER PLUG (Not shown - Optional) |



| Ref # | Part Number | Qty | S/P/F | Description                      |
|-------|-------------|-----|-------|----------------------------------|
| 1     | 618-0063    | 1   |       | BEARING ASSY - FRICTION WHEEL    |
| 2     | 618-0168    | 1   |       | DIFFERENTIAL ASSY COMP.          |
| 3     | 656-0009    | 1   | S     | DISC - FRICTION WHEEL ASSY COMP. |
|       | 756-0564    | 1   | S     | DISC - FRICTION WHEEL            |
|       | 738-0865    | 1   |       | BOLT - SHOULDER                  |
|       | 741-0600    | 1   | S     | BEARING - BALL                   |
| 4     | 681-0055    | 1   | S     | BRACKET ASSY - SUPPORT           |
| 5     | 681-0058    | 2   | /P    | BRACKET ASSY - AXLE              |
| 6     | 681-0069    | 1   |       | SHAFT ASSY - SHIFT               |
| 7     | 681-0072    | 1   |       | ARM ASSY - SHIFT                 |
| 8     | 681-0073    | 1   |       | FRAME ASSY                       |
| 9     | 684-0042    | 1   | S     | WHEEL ASSY - FRICTION            |
| 10    | 710-0502A   | 4   | /P    | SCREW - HEX SELF-TAP             |
| 11    | 710-0653    | 2   | /P    | SCREW - HEX WASHER               |
| 12    | 710-0788    | 1   | /P    | SCREW - HEX WASHER               |
| 13    | 710-0896    | 8   | /P    | SCREW - HEX                      |
| 14    | 710-3008    | 6   | /P    | SCREW - HEX                      |
| 15    | 711-1026    | 1   |       | SHAFT - HEX                      |
| 16    | 711-1028    | 1   |       | SHAFT - JACK                     |
| 17    | 712-0241    | 2   | /P    | NUT - HEX                        |
| 18    | 712-0711    | 1   | /P    | NUT - HEX JAM                    |
| 19    | 712-3004A   | 5   | /P    | NUT - HEX FLANGE LOCK            |
| 20    | 713-0330    | 1   |       | SPROCKET & HUB                   |
| 21    | 713-0374    | 1   | /P    | CHAIN                            |
| 22    | 713-0415    | 1   |       | SPROCKET 11T                     |
| 23    | 714-0474    | 1   | S     | PIN - COTTER                     |
| 24    | 716-0102    | 2   | S     | RING - SNAP                      |
| 25    | 716-0185    | 1   |       | RING - SNAP                      |
| 26    | 732-0264    | 1   | S     | SPRING - EXTENSION               |
| 27    | 736-0105    | 3   | /P    | WASHER - BELL                    |
| 28    | 736-0119    | 2   | S     | WASHER - LOCK                    |
| 29    | 736-0160    | 1   | S     | WASHER - FLAT                    |
| 30    | 736-0267    | 2   | S     | WASHER - FLAT                    |
| 31    | 736-0287    | 4   | S     | WASHER - FLAT                    |
| 32    | 736-3089    | 2   | /P    | WASHER - FLAT                    |
| 33    | 738-0908    | 1   |       | BOLT - IDLER                     |
| 34    | 741-0563    | 2   | S     | BEARING - BALL                   |
| 35    | 748-0382    | 1   |       | SPACER                           |
| 36    | 750-0351    | 1   |       | SLEEVE                           |
| 37    | 750-0978    | 1   |       | SPACER                           |
| 38    | 750-0979    | 1   |       | SPACER                           |
| 39    | 750-0980    | 1   |       | SPACER                           |
| 40    | 750-0981    | 1   |       | SPACER                           |
| 41    | 781-0612    | 1   |       | COVER - FRAME                    |
| 42    | 781-0638    | 2   | S     | PLATE - REINFORCEMENT            |
| 43    | 784-5590    | 1   |       | BRACKET - SHIFT                  |
|       | 788-0637    | 1   |       | BLACK (COLOR CODE)               |
|       | 788-0662    | 1   |       | OYSTER GRAY (COLOR CODE)         |

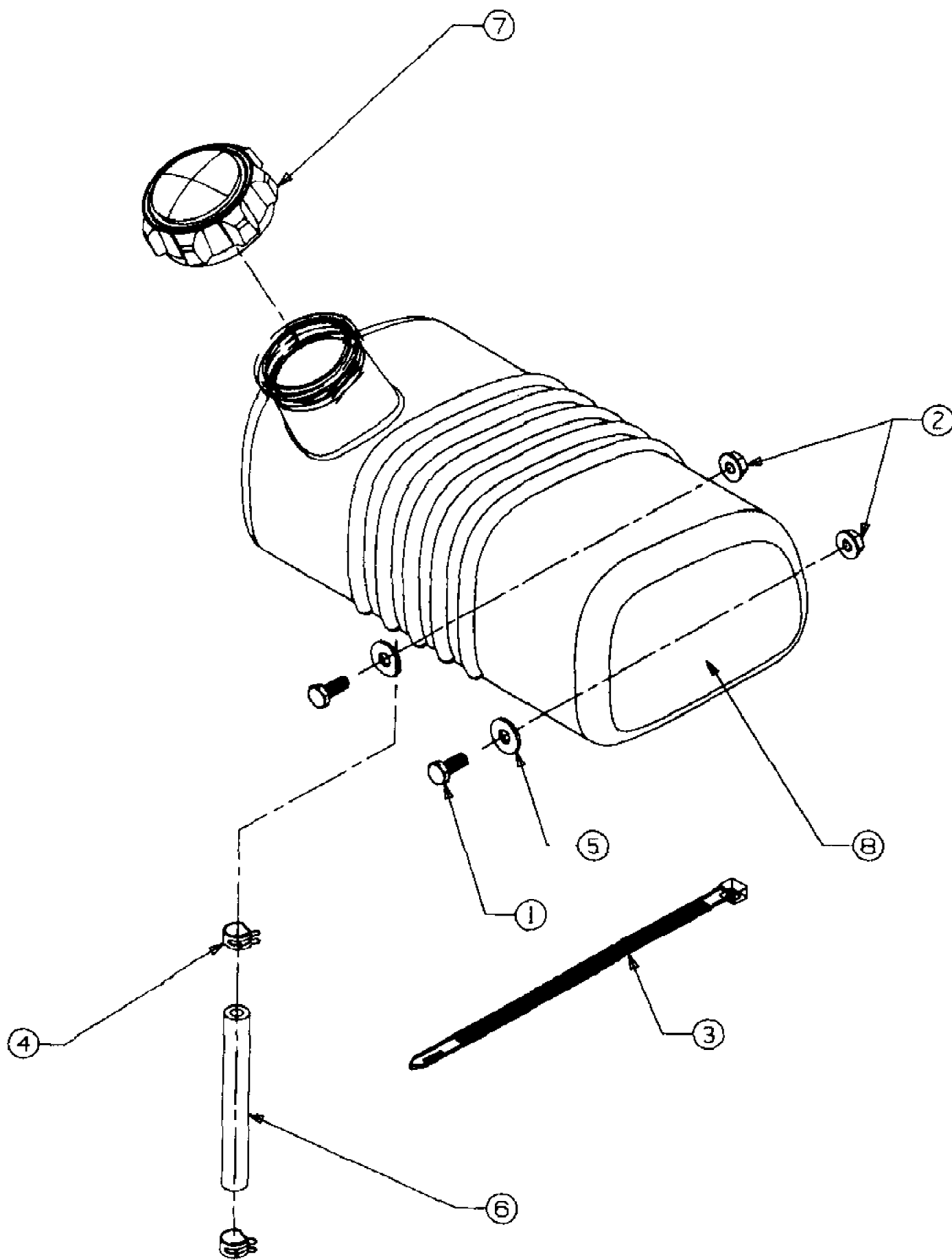


246-315B190 8 H.P. Lawn Vacuum (1996)  
Differential Assembly

Page 8 of 22

| Ref # | Part Number | Qty  | S/P/F | Description                   |
|-------|-------------|------|-------|-------------------------------|
| 1     | 618-0168    | 1    |       | DIFFERENTIAL ASSY COMPLETE    |
| 2     | 710-1206    | 4    | /P    | SCREW - HEX                   |
| 3     | 711-1035    | 1    |       | SHAFT - CROSS                 |
| 4     | 711-1037    | 1    |       | AXLE - SHAFT 10.95" LONG      |
| 5     | 711-1038    | 1    |       | AXLE - SHAFT 9.82" LONG       |
| 6     | 713-0445    | 1    |       | SPROCKET 22T                  |
| 7     | 716-0232    | 4    |       | RING - RETAINING (2 PER AXLE) |
| 8     | 717-1358    | 2    |       | GEAR - DIFFERENTIAL 14T       |
| 9     | 717-1437    | 2    |       | GEAR - DIFFERENTIAL 10T       |
| 10    | 719-0333    | 1    |       | HOUSING - DIFFERENTIAL RH     |
| 11    | 719-0334    | 1    |       | HOUSING - DIFFERENTIAL LH     |
| 12    | 748-0383    | 2    | S     | BEARING - FLANGE              |
| ?13   | 737-0300    | 1 OZ | S     | GREASE                        |
| 14    |             | 1    |       | SEALANT - LOCTITE 5699        |

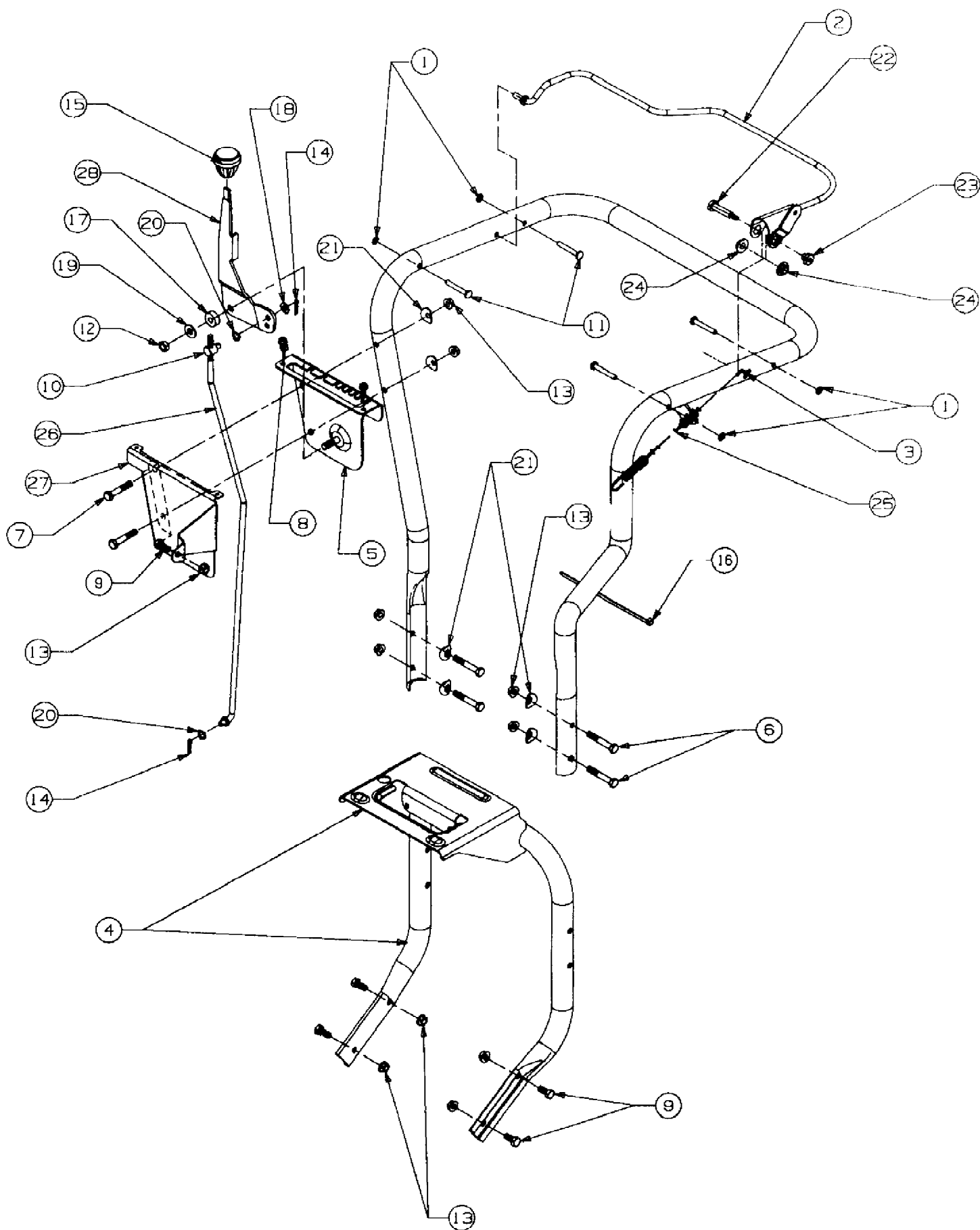




246-315B190 8 H.P. Lawn Vacuum (1996)  
Gas Tank

Page 10 of 22

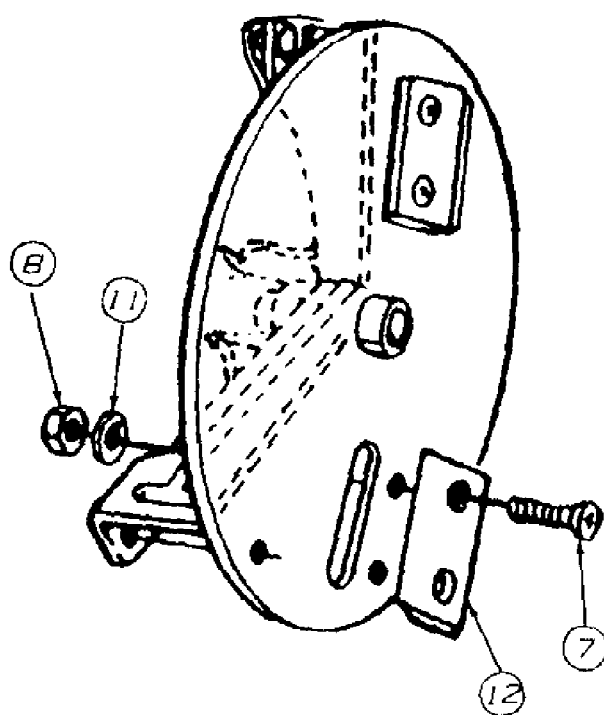
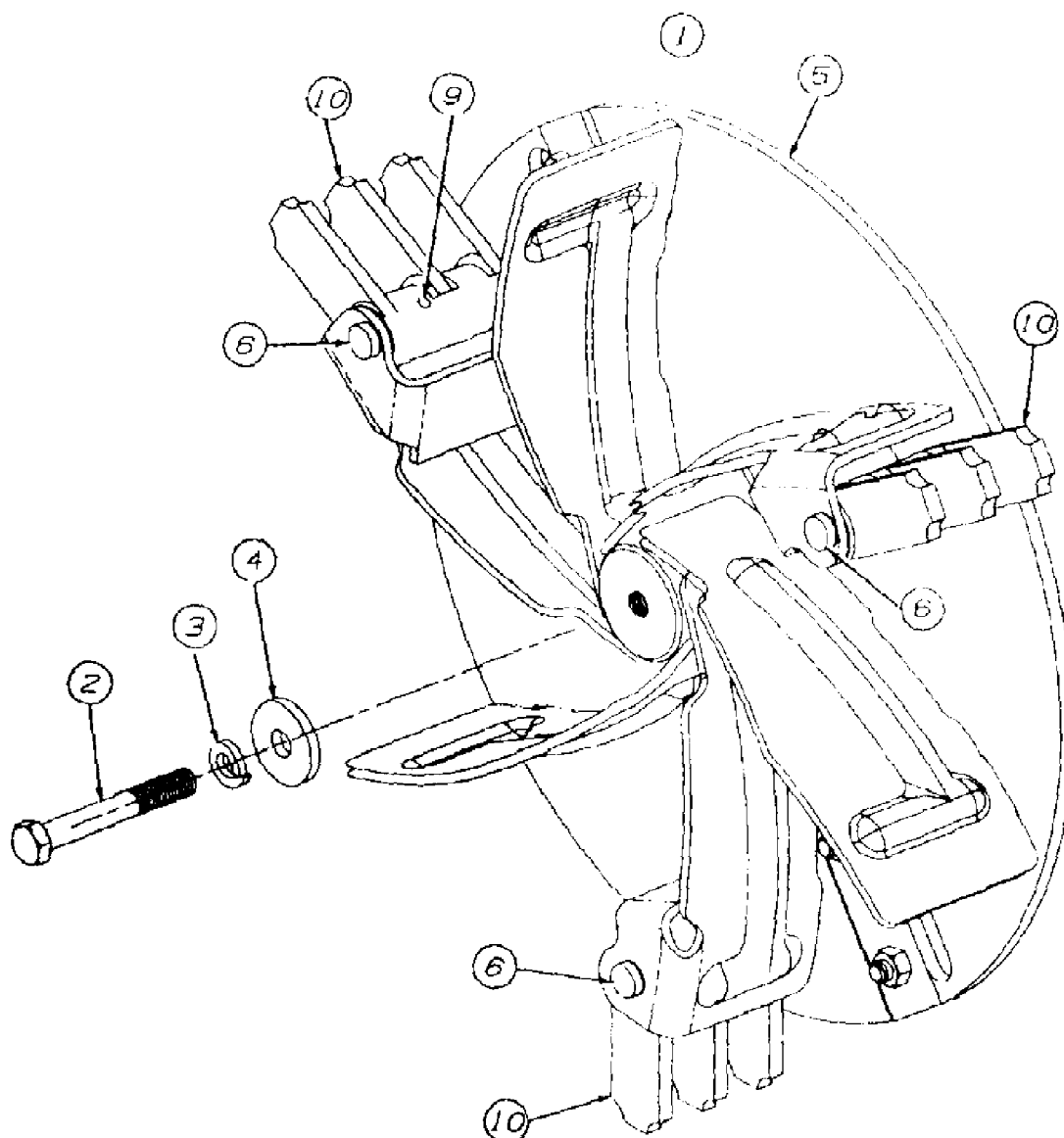
| Ref # | Part Number | Qty | S/P/F | Description           |
|-------|-------------|-----|-------|-----------------------|
| 1     | 710-0258    | 2   | S     | SCREW - HEX           |
| 2     | 712-3027    | 2   | S     | NUT - HEX LOCK FLANGE |
| 3     | 726-0209    | 1   | /P    | CABLE TIE             |
| 4     | 726-0205    | 2   | /P    | CLAMP - HOSE          |
| 5     | 736-0173    | 2   | /P    | WASHER - FLAT         |
| 6     | 751-0535-12 | 1   | S     | HOSE - FUEL LINE 12"  |
| 7     | 751-0603    | 1   | S     | CAP - FUEL            |
| 8     | 751-0615    | 1   |       | TANK - FUEL 1 GALLON  |



246-315B190 8 H.P. Lawn Vacuum (1996)  
Handle Assembly

Page 12 of 22

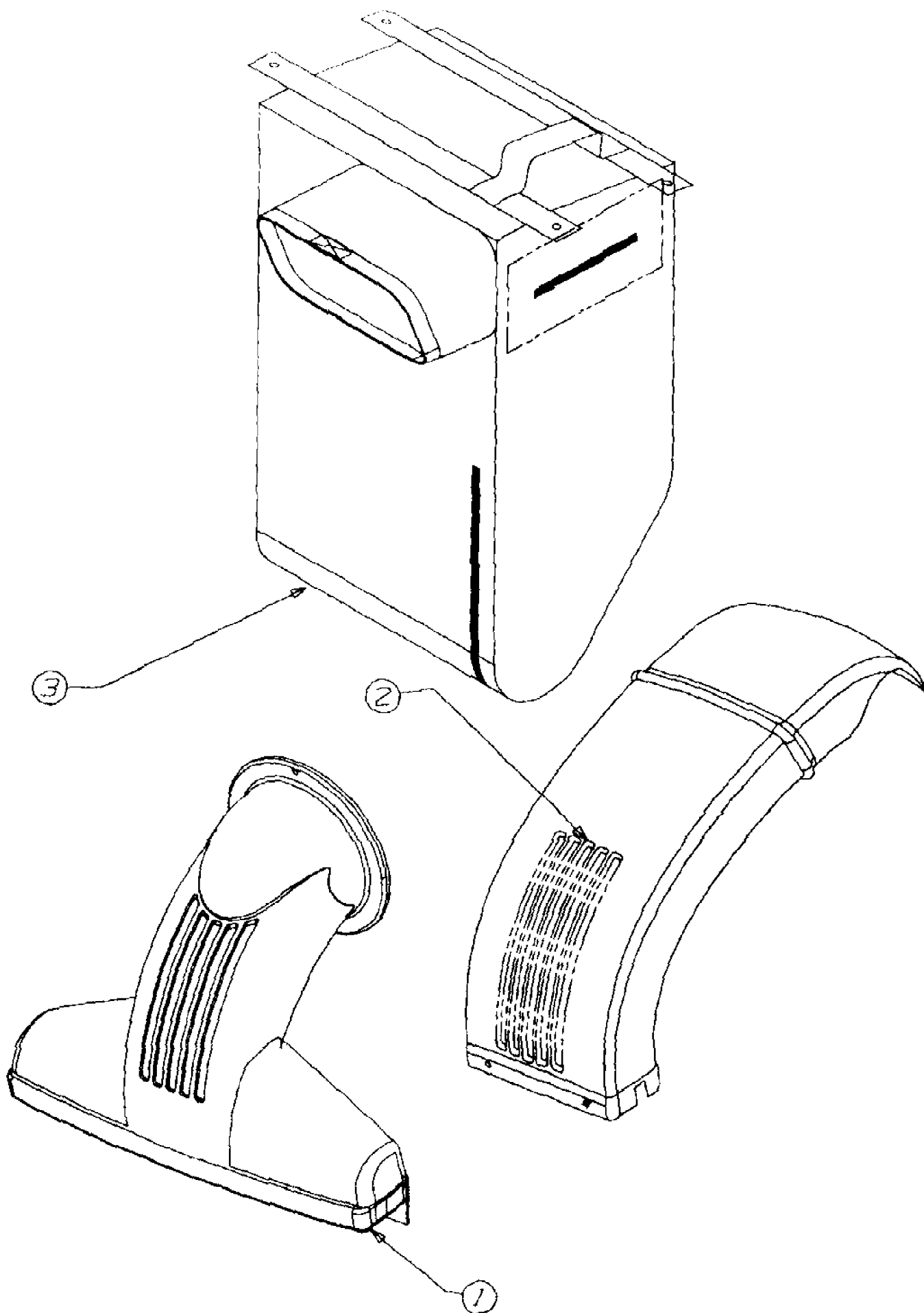
| Ref # | Part Number | Qty | S/P/F | Description              |
|-------|-------------|-----|-------|--------------------------|
| 1     | 1539-019    | 4   |       | PUSHNUT                  |
| 2     | 647-0019    | 1   |       | CONTROL ASSY             |
| 3     | 649-0008    | 1   |       | HANDLE ASSY - UPPER      |
| 4     | 649-0012    | 1   |       | HANDLE ASSY - LOWER      |
| 5     | 681-0076    | 1   |       | BRACKET ASSY - SHIFT     |
| 6     | 710-0116    | 4   | S     | SCREW - HEX              |
| 7     | 710-0380    | 2   | S     | SCREW - HEX              |
| 8     | 710-0896    | 2   | /P    | SCREW - HEX              |
| 9     | 710-3008    | 5   | /P    | SCREW - HEX              |
| 10    | 711-0677    | 1   | S     | FERRULE                  |
| 11    | 711-0737    | 4   | S     | PIN - STUD               |
| 12    | 712-0116    | 1   | S     | NUT - HEX LOCK           |
| 13    | 712-3004A   | 11  | /P    | NUT - HEX LOCK           |
| 14    | 714-0104    | 2   | S     | PIN - COTTER             |
| 15    | 720-0232    | 1   | S     | KNOB - SHIFT             |
| 16    | 725-0157    | 1   | /P    | CABLE - TIE              |
| 17    | 735-0126    | 1   | S     | WASHER - RUBBER          |
| 18    | 736-0264    | 1   | S     | WASHER - FLAT            |
| 19    | 736-0300    | 1   | S     | WASHER - FLAT            |
| 20    | 736-0413    | 2   | /P    | WASHER - SPRING          |
| 21    | 736-0451    | 6   | S     | WASHER - SADDLE          |
| 22    | 738-0560    | 1   | S     | SCREW - SHOULDER         |
| 23    | 738-0561    | 1   | S     | NUT - SHOULDER           |
| 24    | 741-0402    | 2   | S     | BEARING - FLANGE PLASTIC |
| 25    | 746-0921    | 1   | S     | CABLE - CLUTCH           |
| 26    | 747-0626    | 1   |       | ROD - SHIFT              |
| 27    | 781-0626    | 1   |       | COVER - SHIFT            |
| 28    | 784-0297A   | 1   | /P    | HANDLE - SHIFT           |



246-315B190 8 H.P. Lawn Vacuum (1996)  
Impeller Assembly

Page 14 of 22

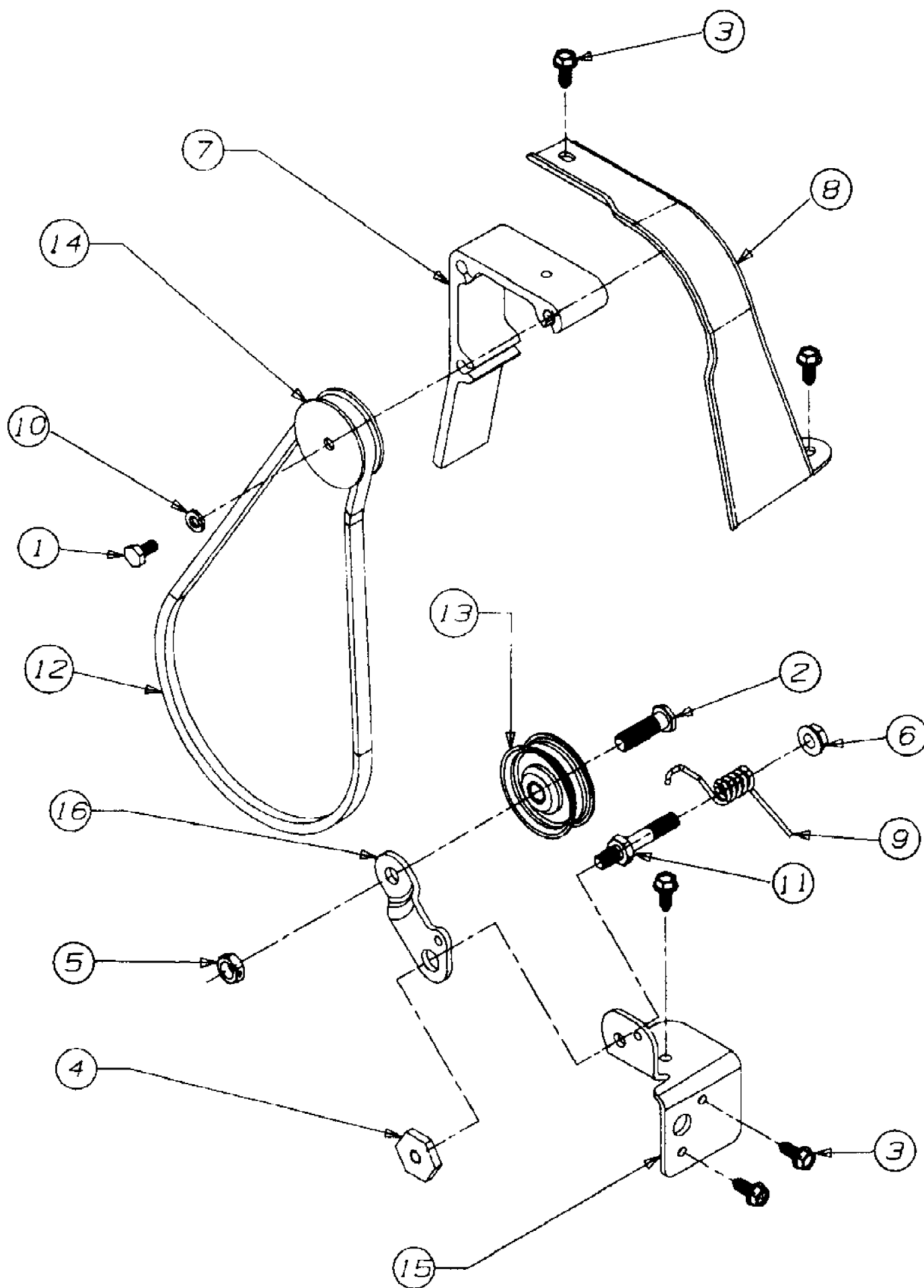
| Ref # | Part Number | Qty | S/P/F | Description                                     |
|-------|-------------|-----|-------|---|
| 1     | 681-0078    | 1   | S     | IMPELLER ASSY COMP. (INCL. REF. NOS. 2 THRU 12) |
| 2     | 710-1273    | 1   |       | SCREW - HEX                                     |
| 3     | 736-0217    | 1   | S     | WASHER - LOCK                                   |
| 4     | 736-0247    | 1   | /P    | WASHER - FLAT                                   |
| 5     | 681-0078    | 1   | S     | IMPELLER ASSY                                   |
| 6     | 711-0833A   | 3   | S     | PIN - CLEVIS                                    |
| 7     | 710-1054    | 4   | /P    | SCREW - FLAT HEAD                               |
| 8     | 712-0411    | 4   | S     | NUT - HEX LOCK                                  |
| 9     | 715-0249    | 3   | S     | PIN - ROLL SPRING                               |
| 10    | 719-0329    | 3   |       | BLADE - FLAIL                                   |
| 11    | 736-0119    | 4   | S     | WASHER - LOCK                                   |
| 12    | 742-0544    | 4   | S     | BLADE - CHIPPER                                 |



246-315B190 8 H.P. Lawn Vacuum (1996)  
Nozzle Assembly

| Ref # | Part Number | Qty | S/P/F | Description            |
|-------|-------------|-----|-------|------------------------|
| 1     | 631-0028    | 1   | S     | NOZZLE ASS'Y. - VACUUM |
| 2     | 731-1573    | 1   |       | CHUTE - DISCHARGE      |
| 3     | 764-0472    | 1   | S     | BAG - VACUUM           |

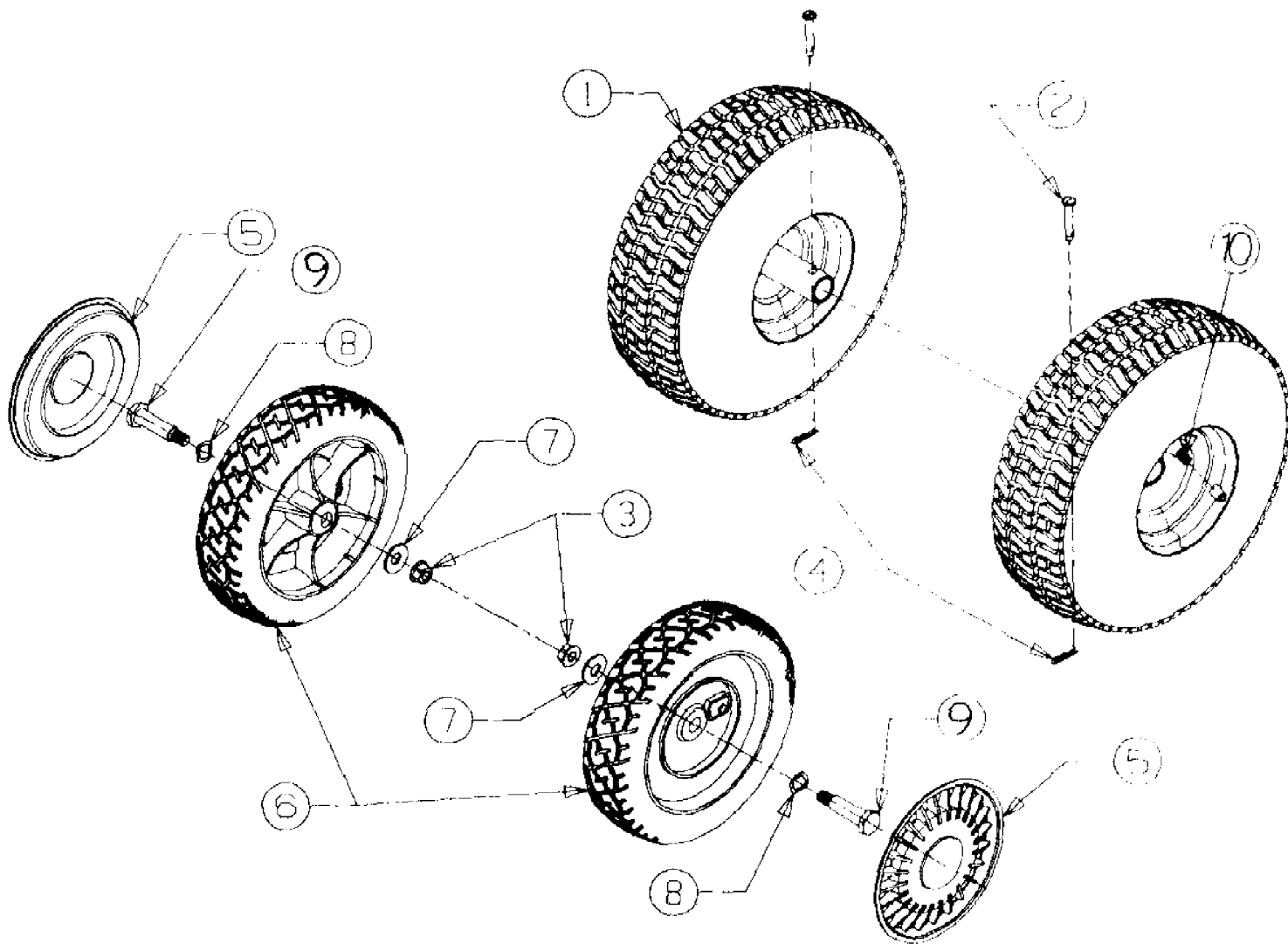




246-315B190 8 H.P. Lawn Vacuum (1996)  
V-Belt Pulley

Page 18 of 22

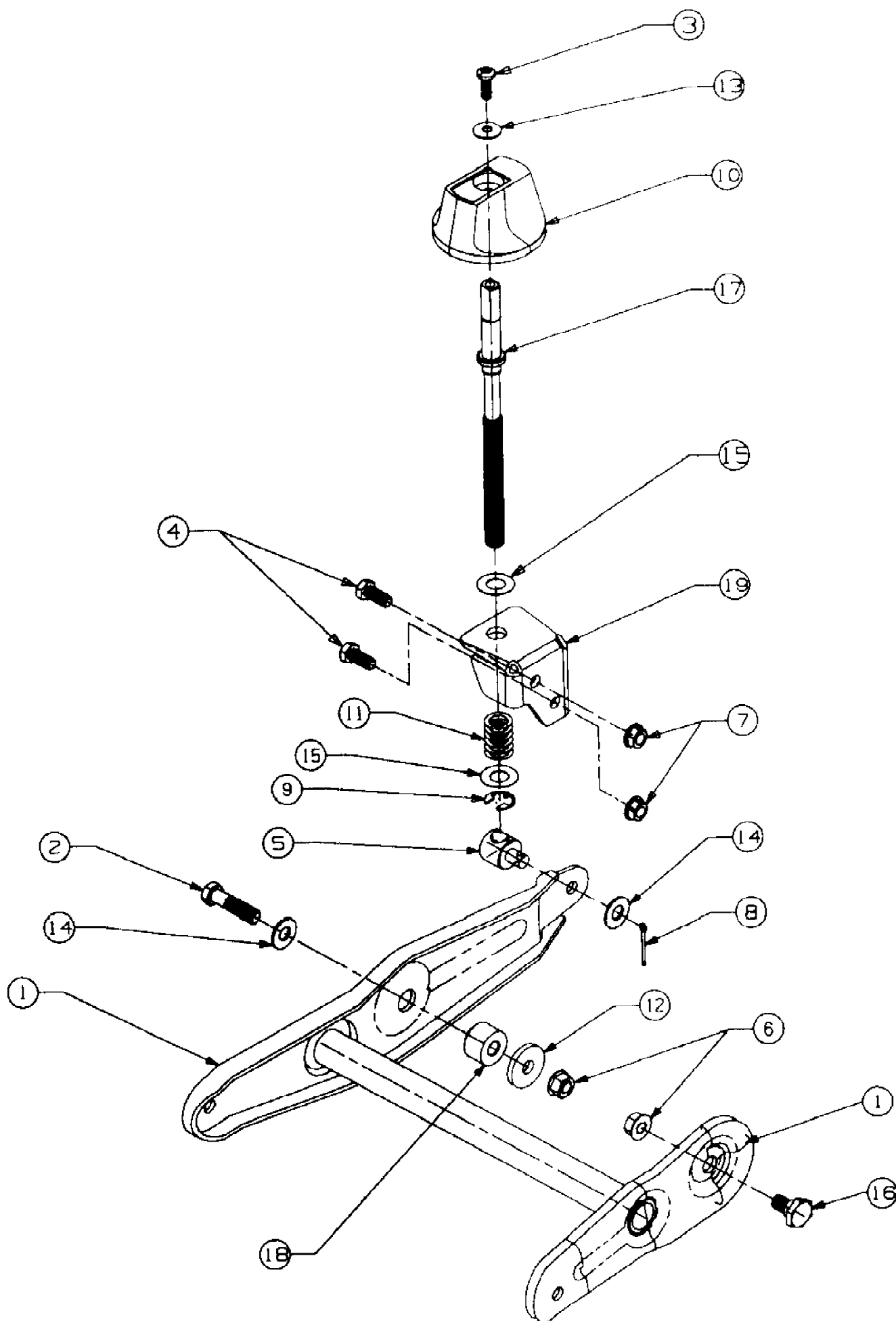
| Ref # | Part Number | Qty | S/P/F | Description           |
|-------|-------------|-----|-------|-----------------------|
| 1     | 710-0230    | 1   | /P    | SCREW - HEX           |
| 2     | 710-0723    | 1   | /P    | SCREW - HEX           |
| 3     | 710-0896    | 5   | /P    | SCREW - HEX           |
| 4     | 711-0758    | 1   | S     | NUT - HEX SHOULDER    |
| 5     | 712-0266    | 1   | S     | NUT - HEX LOCK        |
| 6     | 712-3004A   | 1   | /P    | NUT - HEX LOCK FLANGE |
| 7     | 719-0330    | 1   | S     | ADAPTER - MOUNTING    |
| 8     | 731-1584    | 1   | /P    | COVER - BELT          |
| 9     | 732-0745    | 1   |       | SPRING - TORSION      |
| 10    | 736-0329    | 1   | S     | WASHER - LOCK         |
| 11    | 738-0908    | 1   |       | BOLT - IDLER          |
| 12    | 754-0256    | 1   | S     | V-BELT                |
| 13    | 756-0313    | 1   | /P    | IDLER - FLAT          |
| 14    | 756-0649    | 1   |       | PULLEY                |
| 15    | 781-0611    | 1   |       | BRACKET - IDLER PIVOT |
| 16    | 781-0614    | 1   |       | BRACKET - IDLER       |



246-315B190 8 H.P. Lawn Vacuum (1996)  
Wheel Assembly

Page 20 of 22

| Ref # | Part Number | Qty | S/P/F | Description         |
|-------|-------------|-----|-------|---------------------|
| 1     | 634-0100    | 2   |       | WHEEL ASSY COMPLETE |
|       | 634-0101    | 2   | S     | RIM ASSY COMPLETE   |
|       | 734-1598    | 2   | S     | TIRE PNEUMATIC      |
| 2     | 711-1017    | 2   | /P    | PIN - CLEVIS        |
| 3     | 712-0431    | 2   | S     | NUT - HEX FLANGE    |
| 4     | 714-0104    | 2   | S     | PIN - COTTER        |
| 5     | 731-0981A   | 2   | S     | HUB CAP             |
| 6     | 734-1513B   | 2   | S     | WHEEL               |
| 7     | 736-0105    | 2   | /P    | WASHER - BELL       |
| 8     | 736-0504    | 2   | S     | WASHER - WAVE       |
| 9     | 738-0213    | 2   | /P    | SCREW - SHOULDER    |
| 10    | 734-0255    | 2   | S     | VALVE STEM          |



246-315B190 8 H.P. Lawn Vacuum (1996)  
Wheel Pivot Bracket Assembly

Page 22 of 22

| Ref # | Part Number | Qty | S/P/F | Description             |
|-------|-------------|-----|-------|-------------------------|
| 1     | 681-0070    | 1   |       | BRKT ASSY - WHEEL PIVOT |
| 2     | 710-0520    | 1   | /P    | SCREW - HEX             |
| 3     | 710-0924    | 1   | /P    | SCREW - MACHINE PAN HD  |
| 4     | 710-3008    | 2   | /P    | SCREW - HEX             |
| 5     | 711-1041    | 1   |       | FERRULE - ADJUSTABLE    |
| 6     | 712-0431    | 2   | S     | NUT - HEX FLANGE LOCK   |
| 7     | 712-3004A   | 2   | /P    | NUT - HEX FLANGE        |
| 8     | 714-0115    | 1   | S     | PIN - COTTER            |
| 9     | 716-0104    | 1   | S     | RING-E                  |
| 10    | 720-0236    | 1   | S     | KNOB - PLASTIC          |
| 11    | 732-0645    | 1   | S     | SPRING - COMPRESSION    |
| 12    | 736-0247    | 1   | /P    | WASHER - FLAT           |
| 13    | 736-0270    | 1   | /P    | WASHER - BELL           |
| 14    | 736-0300    | 2   | S     | WASHER - FLAT           |
| 15    | 736-0369    | 2   | S     | WASHER - FLAT           |
| 16    | 738-0258    | 1   | S     | SCREW - SHOULDER        |
| 17    | 747-0631    | 1   |       | ROD - ADJUSTABLE        |
| 18    | 750-0985    | 1   |       | SPACER                  |
| 19    | 781-0605    | 1   | S     | BRACKET - HEIGHT ADJ    |